

MODEL 7158 POWER FOLLOW-UP (HYDRAULIC)

If performance, simplicity and durability are important, this unit incorporates it all. The basic unit provides the same function on a marine craft as a power steering does on a car. This unit, working in conjunction with a hydraulic power source from a pressure compensated pump, will provide fingertip control over the rudder with a manual helm. A solenoid attached to this unit can also be used for either autopilot or jog lever remote control. A flexible linkage arrangement between follow-up unit and the rudder stock is installed to make up for any differences in motion. In case of hydraulic pressure failure, a changeover valve will direct the hydraulic fluid from the manual helm pump directly into the steering cylinders, enabling the ship's personnel to steer the boat safely in a manual mode. Most parts are made in silicon bronze die-cast material with all hardware in stainless steel that will provide years of trouble-free service.

SPECIFICATIONS

Hydraulic power source: Pressure compensated pump

Max. supply pressure: 2000 psi (138 bar)

Max. output flow rate: 60 USG/min. (227 L/min.)

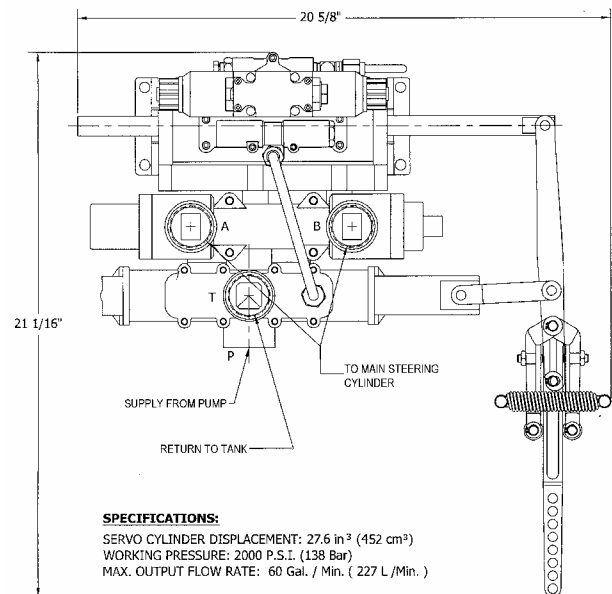
Servo cylinder displacement: 27.6 in³ (452 cm³)

Pipe ports: All ports are for ORB fittings

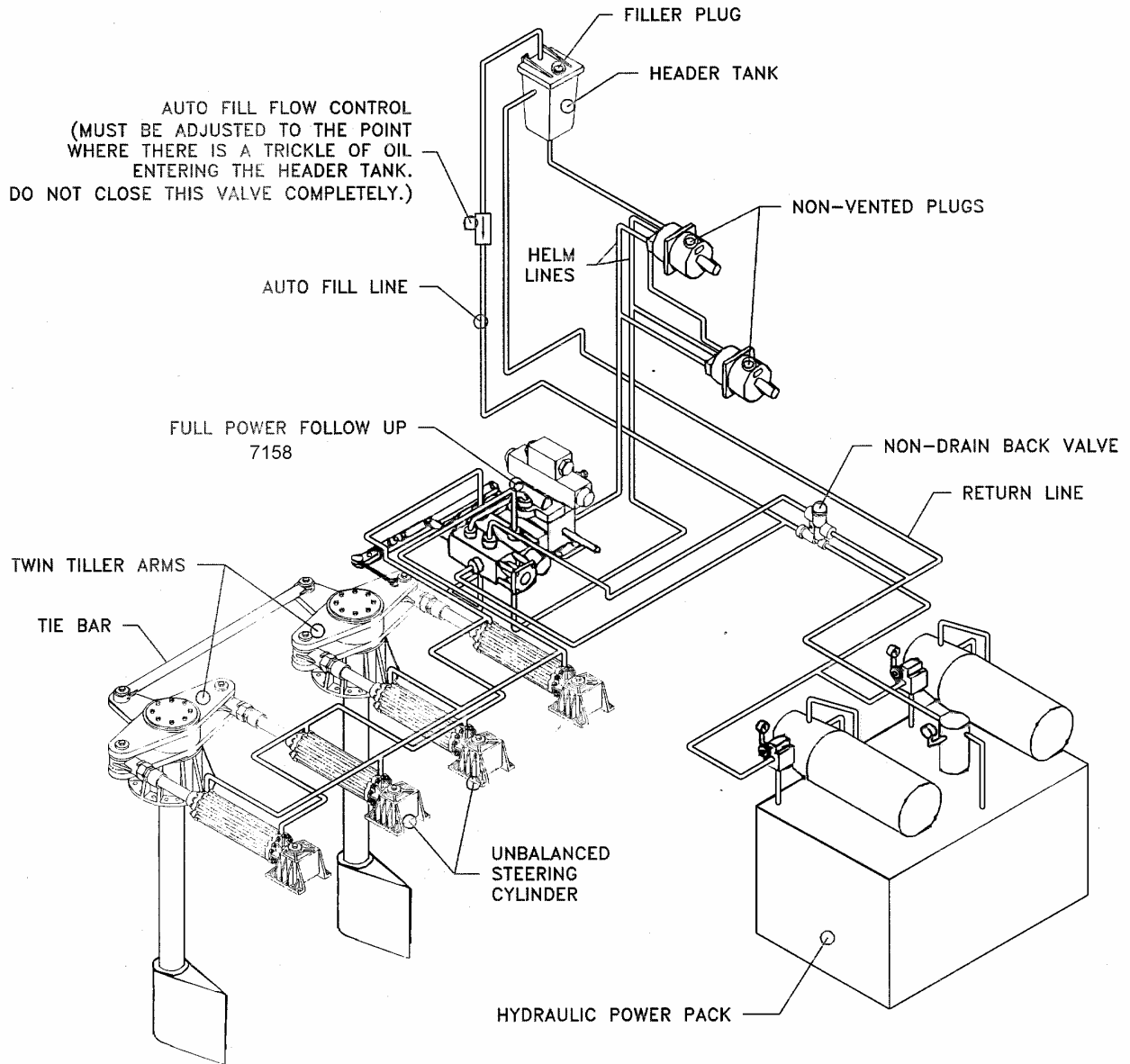
Weight: TBD

ORDERING INFORMATION

7158	without solenoid
7158-DC12	with 12 VDC solenoid
7158-DC24	with 24 VDC solenoid



Typical System Arrangement with 7158 Power Follow Up Unit



The system arrangement shown is for demonstration only. Please consult Kobelt Technical Support Service for more details and other available options.